

LIMA

劉 成

Sales Engineer
S.Z.Mobile:136-8239-6505
MSN:szlima@hotmail.com
QQ:778174600

AVAGO 光耦一级代理商

利瑪電子(新加坡)有限公司
Add:深圳市華強北電子科技大廈A座3908室
Tel:0755-8250 8350 Fax:0755-8836 4656
E-mail:lima@limaic.com
Website:www.limaic.com

Optocoupler
World



APPROVED

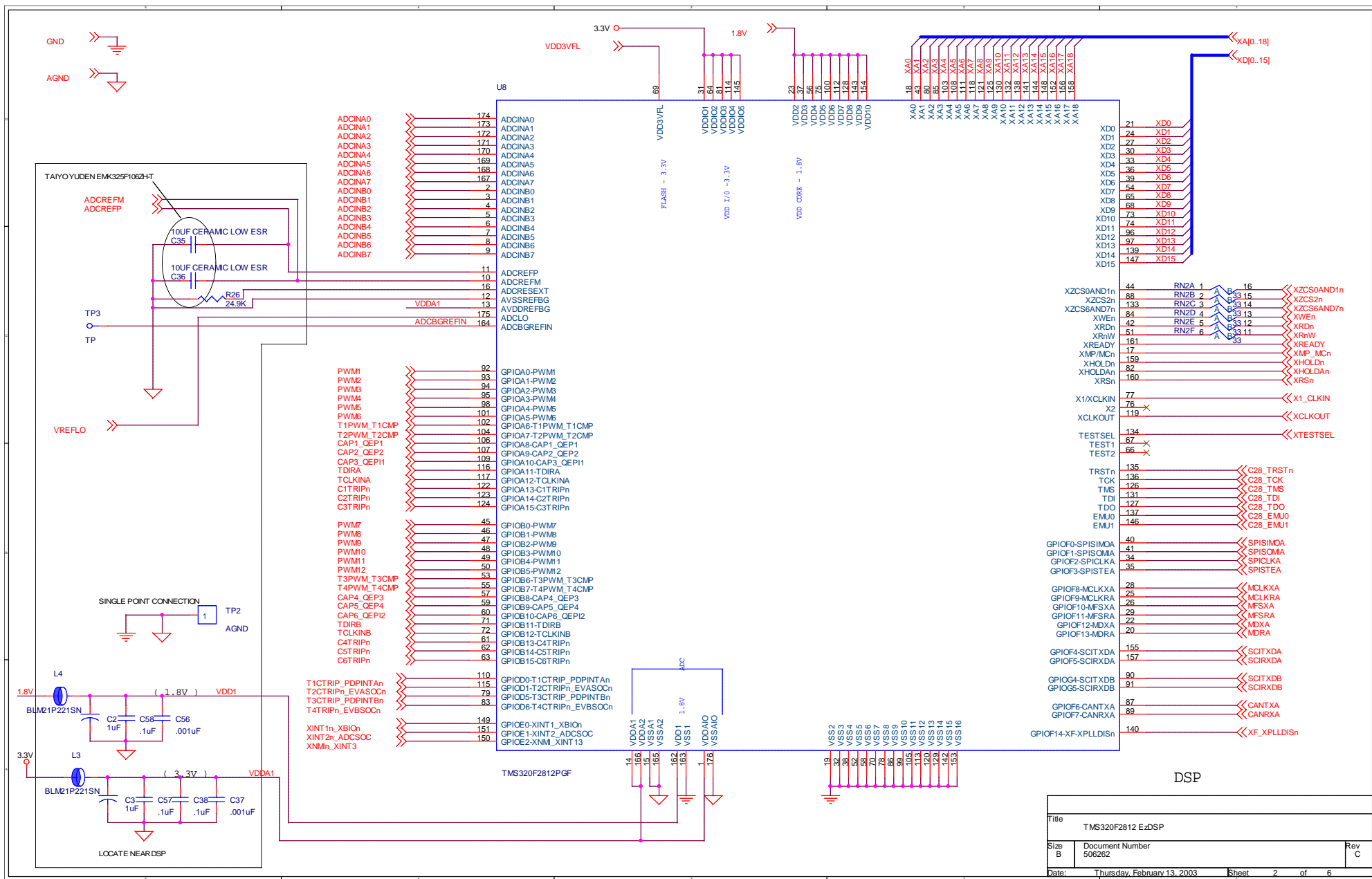
The TMS320F2812 EzDSP design is based on preliminary information (SPRS174G) for the TMS320F2812 device. This schematic is subject to change without notification. Spectrum Digital Inc. assumes no liability for applications assistance, customer product design or infringement of patents described herein.

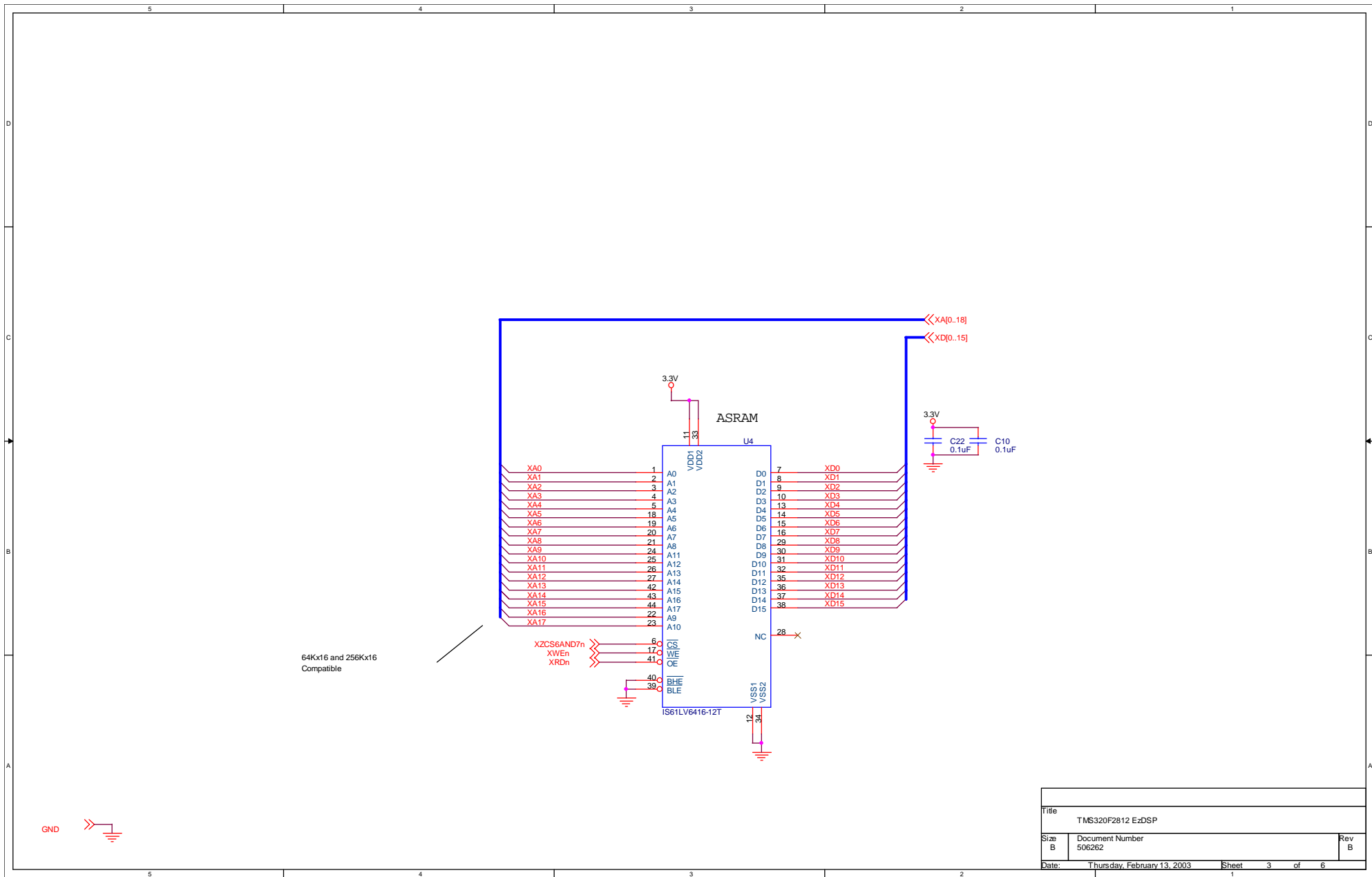
| REVISION STATUS OF SHEETS | | | | | | | DWN | DATE |
|---------------------------|---|---|---|---|---|---|-----------|---------|
| REV | | | | | | | CHK | DATE |
| SH | | | | | | | ENGR | DATE |
| REV | | | | | | | ENGR-MGR | DATE |
| SH | | | | | | | QA | DATE |
| REV | C | C | B | C | C | C | MFG | DATE |
| SH | 1 | 2 | 3 | 4 | 5 | 6 | ELSE | DATE |
| APPLICATION | | | | | | | NEXT ASSY | USED ON |

SPECTRUM DIGITAL

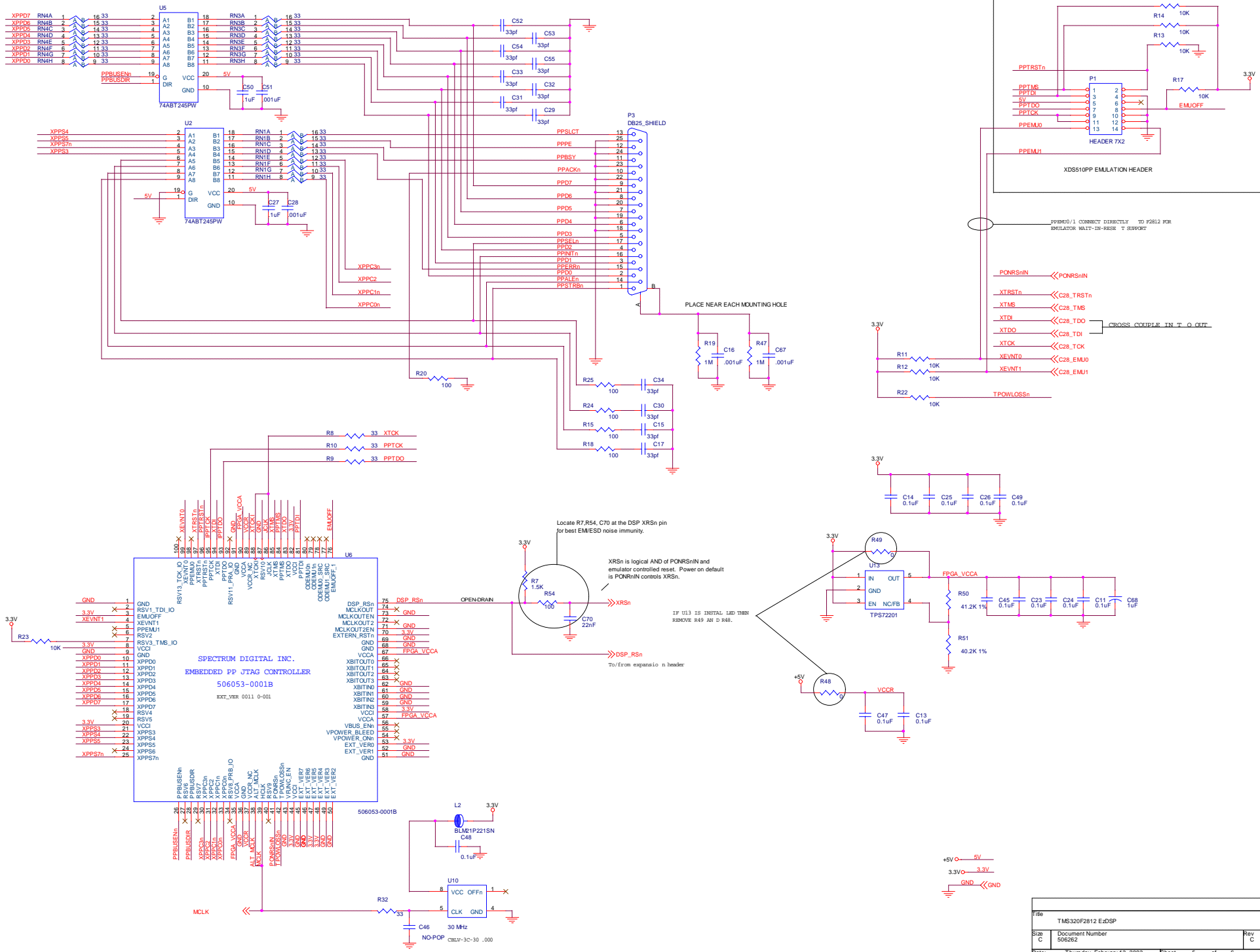
| | | | |
|-------|-----------------------------|-------|-------------------|
| Title | | | TMS320F2812 EzDSP |
| Size | Document Number | Rev | |
| B | 506262 | C | |
| Date: | Thursday, February 13, 2003 | Sheet | 1 of 6 |

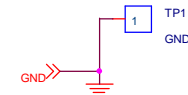
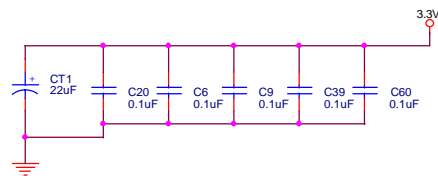
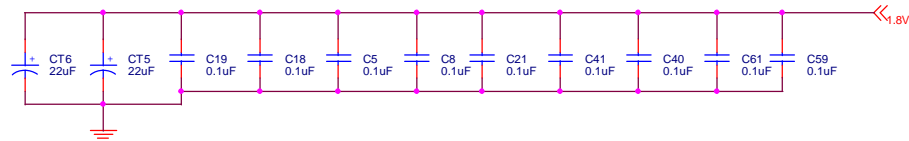
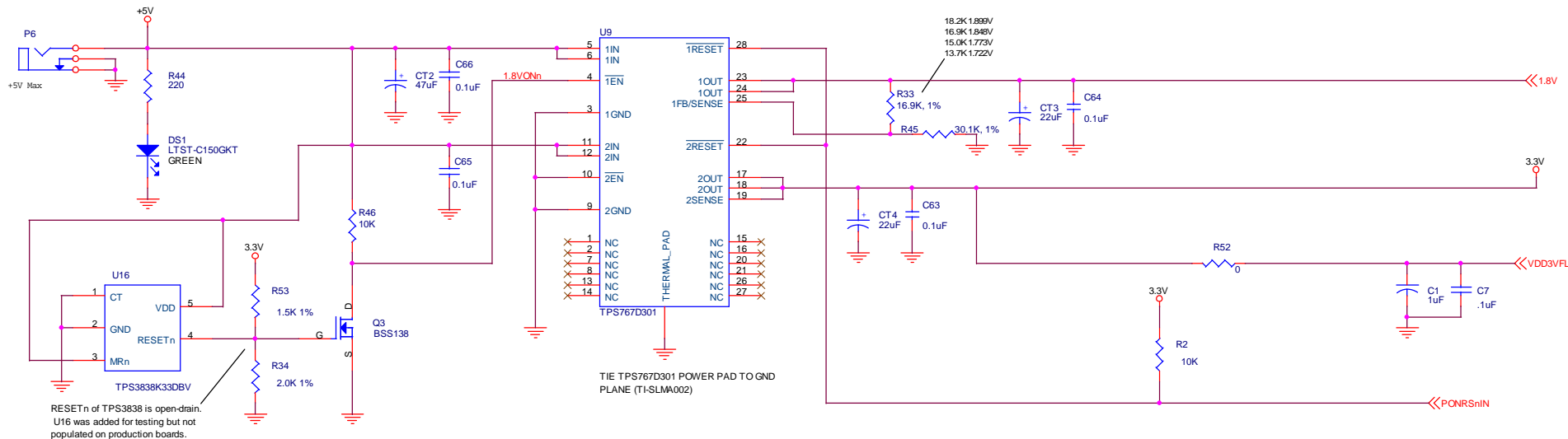
利瑪電子: AVAGO 光耦一级代理商





| | | |
|-------------------|-----------------------------|--------------|
| Title | | |
| TMS320F2812 EzDSP | | |
| Size | Document Number | Rev |
| B | 506262 | B |
| Date: | Thursday, February 13, 2003 | Sheet 3 of 6 |





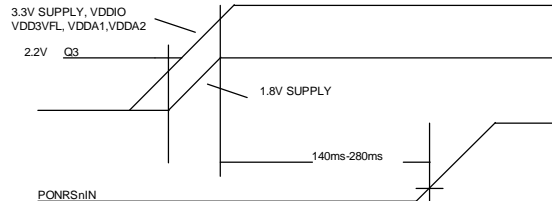
POWER ON SEQUENCE NOTES

3.3V THEN 1.8V

PONRSnIN, GOES HIGH > 200ms AFTER ALL POWER IS STABLE.

SET Q3 TO TURN ON WHEN 3.3V SUPPLY IS GREATER THEN 2.2 VOLTS. REGULATOR TURN ON DELAY AND RAMP RATE WILL ENSURE THAT 3.3V SUPPLY IS AT 2.5 VOLTS OR HIGHER BEFORE THE 1.8V SUPPLY REACHES 0.3 VOLTS.

U16 WILL TURN OFF THE 1.8V SUPPLY WHEN INPUT POWER FALLS BELOW 2.94V. THIS SPEEDS UP THE 1.8V SUPPLY TURN OFF.



TPS767D301 RATINGS

MAX Iout PER CHANNEL IS 1A

TPS767D301 PD = (Vin-Vout)*Iout

| VOLTAGE SUPPLY | MAX CURRENT | TPS767D301 PD |
|----------------|-------------|---------------|
| 1.8V | 333mA | 1065mW |
| 3.3V | 307mA | 521mW |
| | | 1586mW Total |

$$PD(max) = (Tj(max) - Ta) / Rja$$

$$= (125 - 35) / 27.9$$

$$= 3255mW$$

| | | |
|-------------------|-----------------------------|--------------|
| Title | | |
| TMS320F2812 EzDSP | | |
| Size B | Document Number 506262 | Rev C |
| Date: | Thursday, February 13, 2003 | Sheet 6 of 6 |